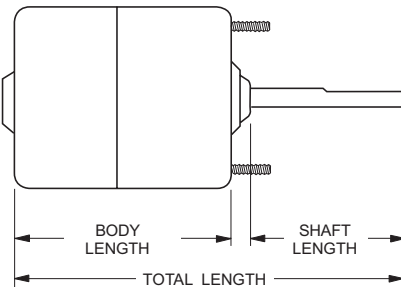
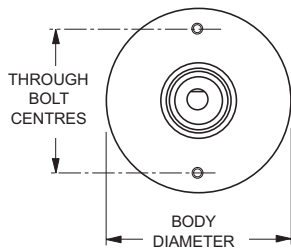


# MOTORS

## QUICK - REFERENCE GUIDE

ITEM	DETAILS	PAGE
APPLICATION GUIDE	- LISTING BY MANUFACTURER .....	322
MOTOR MEASUREMENT	- NOTES ON MEASUREMENT, ROTATION .....	320 & 321
MOTORS : SINGLE SHAFT	- NUMERICAL LISTING and SPECIFICATIONS .....	320
DOUBLE SHAFT	- NUMERICAL LISTING and SPECIFICATIONS .....	321
NON - STANDARD	- ILLUSTRATED LISTING .....	323 - 324
ELECTRIC FAN	- ILLUSTRATED LISTING .....	324
PANCAKE	- NUMERICAL LISTING and SPECIFICATIONS .....	320
PANCAKE	- ILLUSTRATED LISTING .....	324
MOTOR SPARES	- RUBBER MOUNTING INSULATOR .....	324

**Motors: Specifications****STANDARD MOTORS: SINGLE SHAFT**

**NOTE:**  
ROTATION IS DETERMINED BY VIEWING THE MOTOR FROM THE COMMUTATOR, OR LEAD, END.

PART No.	No. OF SHAFTS	No. OF SPEEDS	VOLTS	BODY DIMENSIONS DIA. - LENGTH	SHAFT DIMENSIONS. DIA. - LENGTH	TOTAL LENGTH	ROT'N	CLOSED or VENTED	THROUGH BOLT CENTRES
<b>12 Volt</b>									
MO-12365	1	1	12V	76 mm 102 mm	8 mm 48 mm	170 mm	CCW	VENTED	59 mm
MO-12369	1	1	12V	76 mm 79 mm	8 mm 35 mm	135 mm	C-W	CLOSED	59 mm
MO-12370	1	2	12V	75 mm 104 mm	8 mm 38 mm	153 mm	CCW	VENTED	59 mm
MO-12373	1	1	12V	75 mm 103 mm	8 mm 46 mm	158 mm	REV	VENTED	59 mm
MO-12390	1	1	12V	75 mm 78 mm	8 mm 19 mm	113 mm	C-W	CLOSED	59 mm
MO-12412	1	1	12V	76 mm 102 mm	8 mm 38 mm	163 mm	CCW	VENTED	59 mm
MO-12658 **	1	1	12V	73 mm 98 mm	8 mm 33 mm	144 mm	REV	CLOSED	59 mm
MO-12671	1	1	12V	75 mm 96 mm	8 mm 51 mm	160 mm	REV	CLOSED	59 mm
MO-12685	1	2	12V	75 mm 95 mm	8 mm 44 mm	150 mm	CW	CLOSED	59 mm
MO-12700	1	1	12V	77 mm 72 mm	8 mm 40 mm	125 mm	REV	CLOSED	59 mm
MO-12750 *	1	1	12V	76 mm 104 mm	8 mm 29 mm	141 mm	REV	CLOSED	59 mm
MO-12760 *	1	1	12V	74 mm 104 mm	8 mm 29 mm	141 mm	REV	CLOSED	59 mm

<b>24 Volt</b>									
MO-24340	1	2	24V	76 mm 104 mm	8 mm 35 mm	164 mm	C-W	VENTED	59 mm
MO-24341	1	1	24V	76 mm 79 mm	8 mm 35 mm	125 mm	REV	CLOSED	59 mm
MO-24345	1	1	24V	75 mm 102 mm	8 mm 42 mm	154 mm	REV	VENTED	59 mm
MO-24390	1	1	24V	75 mm 78 mm	8 mm 19 mm	118 mm	REV	CLOSED	59 mm
MO-24658 **	1	1	24V	73 mm 98 mm	8 mm 33 mm	143 mm	REV	CLOSED	59 mm
MO-24671	1	1	24V	74 mm 96 mm	8 mm 52 mm	156 mm	REV	CLOSED	59 mm
MO-24700	1	1	24V	76 mm 88 mm	8 mm 38 mm	128 mm	REV	CLOSED	59 mm
MO-24750 *	1	1	24V	74 mm 102 mm	8 mm 30 mm	140 mm	REV	CLOSED	59 mm
MO-24760 *	1	1	24V	74 mm 104 mm	8 mm 29 mm	140 mm	REV	CLOSED	59 mm

\* Indicates through bolts are at rear, not as illustrated

\*\* Indicates popular "universal" motor with through bolts front and rear

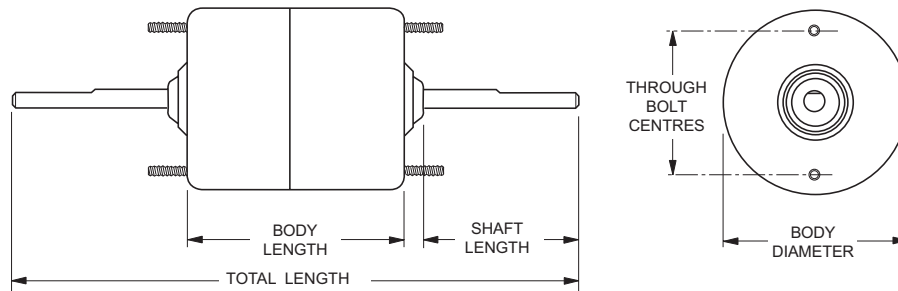
**"PANCAKE" TYPE MOTORS**

PART No.	MAKE	VOLTS	BODY DIA.	APPLICATION	WATTS	ROT'N	CLOSED-VENTED
<b>12 Volt</b>							
MO-12950	AIR-CHIEF / BACO	12V	101 mm	SUITS 9", 10" FANS	140	REV	CLOSED
MO-12955	AIR-CHIEF / BACO	12V	101 mm	SUITS 8" FANS	90	REV	CLOSED
MO-12957	AIR-CHIEF / BACO	12V	101 mm	SUITS 14", 16" FANS	230	REV	CLOSED
MO-12958	AIR-CHIEF / BACO	12V	101 mm	SUITS 11", 12" FANS	175	REV	CLOSED
MO-12982	DAVIES CRAIG	12V	139 mm			REV	CLOSED
MO-12986	DAVIES CRAIG	12V	139 mm			REV	CLOSED
<b>24 Volt</b>							
MO-24965	AIR-CHIEF / BACO	24V	101 mm	SUITS 9", 10" FANS	140	REV	CLOSED
MO-24966	AIR-CHIEF / BACO	24V	101 mm	SUITS 11", 12" FANS	175	REV	CLOSED
MO-24970	AIR-CHIEF / BACO	24V	101 mm	SUITS 14", 16" FANS	230	REV	CLOSED
MO-24982	DAVIES CRAIG	24V	139 mm			REV	CLOSED
MO-24986	DAVIES CRAIG	24V	139 mm			REV	CLOSED

For more information and identification of pancake motors, please refer to the illustrated numerical listing on page 324

## Motors: Specifications

## STANDARD MOTORS: DOUBLE SHAFT



NOTE: ROTATION IS DETERMINED BY VIEWING THE MOTOR FROM THE COMMUTATOR, OR LEAD, END.

PART No.	No. OF SHAFTS	No. OF SPEEDS	VOLTS	BODY DIMENSIONS DIA. - LENGTH		SHAFT DIMENSIONS. DIA. - LENGTH		TOTAL LENGTH	ROT'N	CLOSED or VENTED	THROUGH BOLT CENTRES
----------	---------------	---------------	-------	----------------------------------	--	------------------------------------	--	--------------	-------	------------------	----------------------

## 12 Volt

MO-12235 **	2	3	12V	76 mm	85 mm	8 mm	80 mm	268 mm	C-W	CLOSED	59 mm
MO-12246	2	3	12V	75 mm	104 mm	8 mm	84 mm	293 mm	C-W	VENTED	59 mm
MO-12261	2	1	12V	59 mm	93 mm	8 mm	60 mm	225 mm	C-W	VENTED	N - A
MO-12264	2	1	12V	73 mm	112 mm	8 mm	50 mm	225 mm	C-W	VENTED	N - A
MO-12285 **	2	1	12V	72 mm	105 mm	8 mm	117 mm	355 mm	REV	CLOSED	59 mm
MO-12310	2	1	12V	76 mm	88 mm	8 mm	81 mm	272 mm	C-W	VENTED	59 mm
MO-12330	2	1	12V	72 mm	102 mm	8 mm	65 mm	248 mm	REV	VENTED	64 mm
MO-12360	2	1	12V	72 mm	102 mm	8 mm	65 mm	248 mm	REV	VENTED	59 mm
MO-12368	2	1	12V	78 mm	114 mm	8 mm	72 mm	278 mm	CCW	VENTED	64 mm
MO-12372	2	1	12V	75 mm	104 mm	8 mm	48 mm	218 mm	REV	CLOSED	59 mm
MO-12376	2	3	12V	76 mm	92 mm	8 mm	68 mm	255 mm	C-W	VENTED	59 mm
MO-12393	2	1	12V	76 mm	105 mm	8 mm	45 mm	209 mm	REV	VENTED	59 mm
MO-12394	2	1	12V	75 mm	102 mm	8 mm	92 mm	305 mm	REV	VENTED	59 mm
MO-12396	2	1	12V	74 mm	115 mm	8 mm	74 mm	280 mm	REV	VENTED	59 mm
MO-12418 **	2	3	12V	76 mm	104 mm	8-10 mm*	105 mm	345 mm	C-W	VENTED	59 - 72 mm
MO-12420 **	2	3	12V	89 mm	104 mm	10 mm	110 mm	345 mm	C-W	VENTED	72 mm
MO-55112	2	1	12V	75 mm	92 mm	10 mm	98 mm	309 mm	C-W	VENTED	59 mm
MO-62747	2	1	12V	67 mm	78 mm	8 mm	75 mm	259 mm	C-W	VENTED	N - A
MO-72111	2	1	12V	67 mm	78 mm	8 mm	63/58 mm	230 mm	C-W	VENTED	N - A

\* MO-12418 includes brackets and shaft bushes to enable replacement of motors with 76 or 89 mm body, and 8 or 10 mm shafts.

## 24 Volt

MO-24046	2	3	24V	75 mm	104 mm	8 mm	82 mm	295 mm	C-W	VENTED	59 mm
MO-24235 **	2	3	24V	76 mm	85 mm	8 mm	84 mm	268 mm	C-W	CLOSED	59 mm
MO-24243	2	1	24V	76 mm	102 mm	8 mm	65 mm	248 mm	C-W	VENTED	62 mm
MO-24245	2	1	24V	76 mm	102 mm	8 mm	65 mm	254 mm	C-W	VENTED	59 mm
MO-24349	2	1	24V	75 mm	103 mm	8 mm	55 mm	219 mm	REV	CLOSED	59 mm
MO-24350	2	3	24V	76 mm	94 mm	8 mm	74 mm	254 mm	REV	VENTED	59 mm
MO-24393	2	1	24V	76 mm	105 mm	8 mm	45 mm	209 mm	REV	VENTED	59 mm
MO-24394	2	1	24V	75 mm	102 mm	8 mm	98 mm	305 mm	REV	VENTED	59 mm
MO-24396	2	1	24V	74 mm	115 mm	8 mm	74 mm	280 mm	REV	VENTED	59 mm
MO-24420	2	3	24V	89 mm	106 mm	10 mm	108 mm	355 mm	C-W	VENTED	72 mm
MO-55114	2	1	24V	75 mm	92 mm	10 mm	98 mm	309 mm	C-W	VENTED	59 mm
MO-64848	2	1	24V	67 mm	88 mm	8 mm	70 mm	258 mm	C-W	VENTED	N - A
MO-74111	2	1	24V	67 mm	78 mm	8 mm	63/58 mm	230 mm	C-W	VENTED	N - A

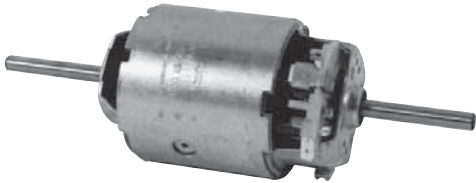
\*\* Indicates popular "universal" motor

**Motors: Application listing****APPLICATION BY MANUFACTURER**

VEHICLE/UNIT	VOLTS	MODEL	APPLICATION	OE PART No.	PART No.	NOTES
AIR CHIEF	12	CN-92512	CONDENSER		MO-12658	
AIR CHIEF	24	CN-92524	CONDENSER		MO-24658	
BACO	12		FAN	60027	MO-12950	
BACO	12	FA-10282	FAN	60025	MO-12955	
BACO	12		FAN	60036-1-W	MO-12957	
BACO	12		FAN	60026-1-W	MO-12958	
BACO	24		FAN	60030-1-W	MO-24965	
BACO	24		FAN	60029	MO-24966	HEAVY DUTY
DAVIES CRAIG	12	DC12, DCP2	FAN	SSW-1158D; DC-0201	MO-12982	
DAVIES CRAIG	12	DC31	FAN	SSW-1158R; DC-0202	MO-12986	
DAVIES CRAIG	24	DC12	FAN	SSW-11117; DC-0216, 1158D-24	MO-24982	
DAVIES CRAIG	24	DC31	FAN	SSW-1193R DC-0210; 11117R	MO-24986	
FRIGIKING	12		BLOWER	91-15622	MO-12285	
HUPP - AIRE	12	V524 ROOFTOP	BLOWER	64909-G1	MO-55112	
HUPP - AIRE	24	ROOFTOP	BLOWER	65909-G2	MO-55114	
KYSOR	12	KA200; KA 300 to 1983	BLOWER	275102	MO-12310	
KYSOR	12	E20000	BLOWER	275122	MO-12330	
KYSOR	12	KA700; KA300 1983 on	BLOWER	275152	MO-12360	
KYSOR	12	KA300	CONDENSER	275130	MO-12658	
KYSOR	24	E20000	BLOWER	275222	MO-24243	
KYSOR	24	KA700; KA300 1983 on	BLOWER	275252	MO-24245	
KYSOR	24	KA300	CONDENSER	275230	MO-24658	
MACK	12	SOME WITH RED DOT	BLOWER	5-5512-0 (73R0912)	MO-12412	
MARK IV	12	UNIVERSAL	CONDENSER	26892	MO-12658	
MARK IV	24	503 & 566	CONDENSER	26893	MO-24658	
MARK IV	12	UNIVERSAL	BLOWER	25106	MO-12235	
RED DOT	12	R5045	BLOWER	5-4233-0 (73R4502)	MO-12368	
RED DOT	12	R7810	BLOWER	3106-18 (73R0202)	MO-12369	
RED DOT	12	R7810, R4013H	BLOWER	3106-13 (73R0602)	MO-12370	
RED DOT	12	R7820, R7830	BLOWER	5-3753-1 5-4827-0, (73R0402)	MO-12373	
RED DOT	12	R8515, R9727	BLOWER	5-3757-12 (73R4202)	MO-12372	
RED DOT	12	R2000	BLOWER	5-3780-0 (73R4102)	MO-12235	
RED DOT	12	R4013H	BLOWER	5-4550-0 (73R0102)	MO-12390	
RED DOT	12	R4122	BLOWER	5-8203-0 (73R0962)	MO-12365	
RED DOT	12	R6000	BLOWER	5-4201-1	MO-12372	
RED DOT	12	R6100, R8545	BLOWER	5-5121-1 (73R4262)	MO-12393	
RED DOT	12	R9750	BLOWER	5-5121-0 (73R4252)	MO-12394	
RED DOT	12	R9737, R9757	BLOWER	5-5049-0 (73R4422)	MO-12396	
RED DOT	12	R6000, R9720, R9727	CONDENSER	5-5120-0 5-3690-0, (73R0512)	MO-12750	
RED DOT	12	R6100, R9725	CONDENSER	5-7129-0 (73R0542)	MO-12760	
RED DOT	24	R7810; R4013H	BLOWER	3106-13-24 (73R0604)	MO-24340	
RED DOT	24	R7810	BLOWER	3106-18-24 (73R0204)	MO-24341	
RED DOT	24	R7820, R7830	BLOWER	5-4827-24 (73R0404)	MO-24345	
RED DOT	24	R8515, R9727	BLOWER	5-3757-24 (73R4204)	MO-24349	
RED DOT	24	R6100, R8545	BLOWER	5-5121-2 (73R4264)	MO-24393	
RED DOT	24	R9750	BLOWER	5-5121-24 (73R4254)	MO-24394	
RED DOT	24	R2000	BLOWER	5-3780-24 (73R4104)	MO-24350	
RED DOT	24	R6000	BLOWER	5-4201-2 (73R4204)	MO-24349	
RED DOT	24	R4013H	BLOWER	5-4550-24 (73R0104)	MO-24390	
RED DOT	24	R9737, R9757	BLOWER	5-5049-24 (73R4424)	MO-24396	replaces MO-24754
RED DOT	24	R6000, R9720, R9727	CONDENSER	5-5120-24 5-3690-24 (73R0514)	MO-24750	
RED DOT	24	R6100, R9725	CONDENSER	5-7129-24 (73R0544)	MO-24760	
SANDEN	12	747	BLOWER	51500-10151	MO-62747	
SANDEN	24	848	BLOWER	51500-10241	MO-64848	
UNICLA	12	SUPERKING	BLOWER	MO111	MO-72111	
UNICLA	24	SUPERKING	BLOWER	MO111-24	MO-74111	
VERSATILE 935	12		BLOWER		MO-12285	

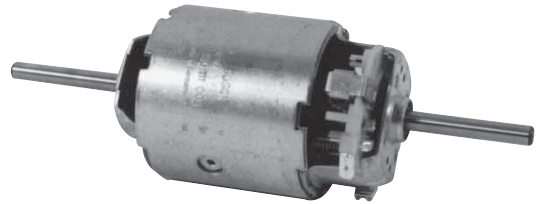
**Motors: Illustrated Listing**

**NON - STANDARD MOTORS**



**Bosch 59 mm Diameter  
MO-12261 - 12 volt**

TYPE: SINGLE SPEED, VENTED  
 ROTATION: CLOCKWISE  
 SHAFT: 8 mm  
 WIRING-TERMINALS: 2 LEADS; PLASTIC PLUG FOR MALE / FEMALE TERMINALS



**Bosch 73 mm Diameter  
MO-12264 - 12 volt**

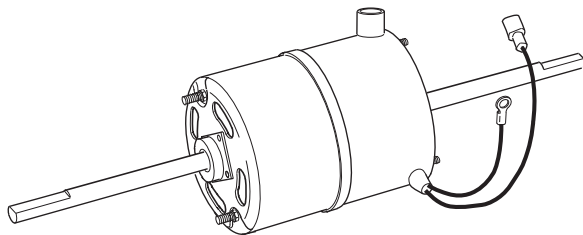
TYPE: SINGLE SPEED, VENTED  
 ROTATION: CLOCKWISE  
 SHAFT: 8 mm  
 WIRING-TERMINALS: 2 LEADS; PLASTIC PLUG FOR MALE / FEMALE TERMINALS



**MO-12418 - 12 volt**

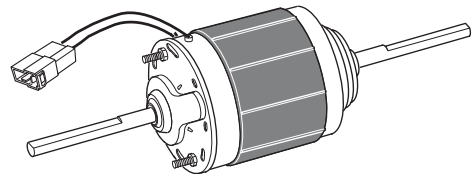
TYPE: THREE SPEED, VENTED  
 ROTATION: CLOCKWISE  
 SHAFT: 8 - 10mm (5/16" - 3/8") 8 to 10mm sleeve supplied  
 WIRING-TERMINALS: 4 LEADS - FEMALE SPADE TERMINALS WITH EYE TERMINAL ON EARTH LEAD

**NOTE:** This motor is supplied with brackets and shaft sleeves and can be used to replace motors with either 76mm or 89mm body diameter, and 8 or 10mm shaft diameter.



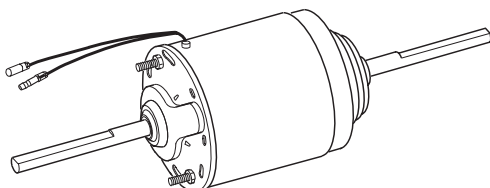
**MO-55112 - 12 volt  
MO-55114 - 24 volt**

TYPE: SINGLE SPEED, VENTED  
 ROTATION: CLOCKWISE  
 SHAFT: 10 mm (3/8")  
 WIRING-TERMINALS: 2 LEADS: MALE SPADE AND EYE TERMINAL



**MO-62747 - 12 volt  
MO-64848 - 24 volt**

TYPE: SINGLE SPEED, VENTED  
 ROTATION: CLOCKWISE  
 SHAFT: 8 mm (5/16")  
 WIRING-TERMINALS: 2 LEADS WITH MALE SPADE TERMINALS IN PLASTIC PLUG



**MO-72111 - 12 volt  
MO-74111 - 24 volt**

TYPE: SINGLE SPEED, NON-VENTED  
 ROTATION: CLOCKWISE  
 SHAFT: 8 mm (5/16")  
 WIRING-TERMINALS: 2 LEADS: MALE BULLET TERMINALS

**Motors: Illustrated Listing****CONDENSER FAN MOTORS**

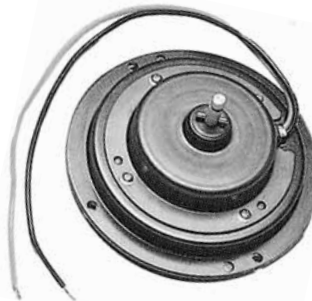
PART No.	MAKE	VOLTS	BODY DIA.	APPLICATION	WATTS	ROT'N	CLOSED-VENTED
MO-12950	AIR-CHIEF / BACO	12V	101 mm	SUITS 9", 10" FANS	140	REV	CLOSED
MO-12955	AIR-CHIEF / BACO	12V	101 mm	SUITS 8", FANS	90	REV	CLOSED
MO-12957	AIR-CHIEF / BACO	12V	101 mm	SUITS 14", 16" FANS	230	REV	CLOSED
MO-12958	AIR-CHIEF / BACO	12V	101 mm	SUITS 11", 12" FANS	175	REV	CLOSED
MO-24965	AIR-CHIEF / BACO	24V	101 mm	SUITS 9", 10" FANS	140	REV	CLOSED
MO-24966	AIR-CHIEF / BACO	24V	101 mm	SUITS 11", 12" FANS	175	REV	CLOSED
MO-24970	AIR-CHIEF / BACO	24V	101 mm	SUITS 14", 16" FANS	230	REV	CLOSED

**NOTE:** These motors have been specially designed for severe operating conditions, and are sealed to give maximum dust and water ingress resistance and protection .



**MO-12982 - 12 volt**  
**MO-24982 - 24 volt**

TYPE: DAVIES CRAIG, SINGLE SPEED, NON-VENTED  
ROTATION: REVERSIBLE  
SHAFT: 8 mm (5/16")  
WIRING -TERMINALS: 2 LEADS, NO TERMINALS



**MO-12986 - 12 volt**  
**MO-24986 - 24 volt**

TYPE: DAVIES CRAIG, SINGLE SPEED, NON-VENTED  
ROTATION: REVERSIBLE  
SHAFT: 8 mm (5/16")  
WIRING -TERMINALS: 2 LEADS, NO TERMINALS

**MOTOR ACCESSORIES****MOS-99500**

RUBBER MOTOR MOUNTING INSULATOR  
FOR STANDARD 75mm DIAMETER MOTORS.

SUPPLIED AS A FLAT STRIP - CAN BE TRIMMED TO  
LENGTH FOR SMALLER DIAMETER MOTORS.

