



## **ROOFTOP CONDENSERS**

### **QUICK - REFERENCE GUIDE**

<b>ITEM</b>	<b>DETAILS</b>	<b>PAGE</b>
<b>ROOFTOP CONDENSERS</b>		
	AIR - CHIEF .....	180
	RED DOT .....	180 - 181
	ROOFTOP CONDENSER REPLACEMENT COILS .....	182 - 183

**Condensers: Roof - Mount****AIR - CHIEF****AIR - CHIEF HEAVY DUTY****CNR - 92512 (12 volt)****CNR - 92524 (24 volt)****SPECIFICATIONS**

CAPACITY:	43,000 BTU'S/hr (10,836 KCAL/hr) (CALCULATED AT 37.5° C. AMBIENT; 70° C. CONDENSING TEMPERATURE)
AIRFLOW:	1,250 CFM
CURRENT DRAW:	17 AMPS AT 12 VOLTS: 8.5 AMPS AT 24 VOLTS
WIDTH:	920 mm
DEPTH:	400 mm
HEIGHT:	230 mm
WEIGHT:	21 kgs
RECEIVER-DRIER	(HIGH CAPACITY) INCLUDED.
SAFETY CUT-OUT SWITCH:	INCLUDED

**NOTE: THE CAPACITY OF A CONDENSER DOES NOT INDICATE THE COOLING CAPACITY OF A SYSTEM.**

**RED DOT****SPECIFICATIONS**

CALCULATED CAPACITY:	24,000 BTU'S/HOUR (38° C. AMBIENT; 57° C. REFRIG TEMP.)
AIRFLOW:	NOT AVAILABLE
CURRENT DRAW:	12 AMPS AT 13.6 VOLTS 6 AMPS AT 27.2 VOLTS
WIDTH:	643 mm
DEPTH:	572 mm
HEIGHT:	188 mm
WEIGHT:	10.45 kgs

**RED DOT MODEL R6160****CNR - 96412 (12 volt)****CNR - 96424 (24 volt)**

**NOTE: THE CAPACITY OF A CONDENSER DOES NOT INDICATE THE COOLING CAPACITY OF A SYSTEM.**

**RED DOT MODEL R6260****CNR - 96432 (12 volt)****CNR - 96434 (24 volt)****SPECIFICATIONS**

CALCULATED CAPACITY:	38,800 BTU'S/HOUR (38° C. AMBIENT; 57° C. REFRIG. TEMP.)
AIRFLOW:	970 CFM
CURRENT DRAW:	15 AMPS AT 13.6 VOLTS 8.5 AMPS AT 27.2 VOLTS
WIDTH:	645 mm
DEPTH:	580 mm
HEIGHT:	216 mm
WEIGHT:	14 kgs

**NOTE: THE CAPACITY OF A CONDENSER DOES NOT INDICATE THE COOLING CAPACITY OF A SYSTEM.**

## Condensers: Roof - Mount

### RED DOT

#### SPECIFICATIONS

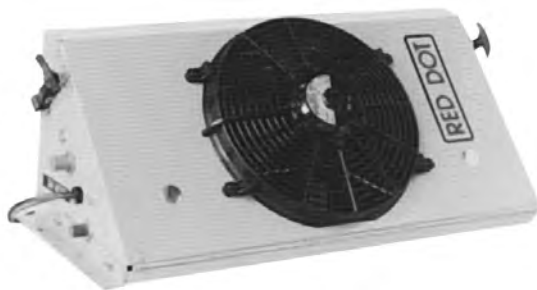
CALCULATED CAPACITY:	45,200 BTU'S/HOUR (38° C. AMBIENT; 57° C. REF. TEMP.)
AIRFLOW:	2,010 CFM
CURRENT DRAW:	30.3 AMPS AT 13.6 VOLTS 15.2 AMPS AT 27.2 VOLTS
WIDTH:	1086 mm
DEPTH:	560 mm
HEIGHT:	237 mm
WEIGHT:	38.6 kgs



#### RED DOT MODEL R4500

CNR - 96442	(12 volt)
CNR - 96444	(24 volt)

**NOTE:**  
THE CAPACITY OF A CONDENSER DOES NOT INDICATE  
THE COOLING CAPACITY OF A SYSTEM.



#### RED DOT MODEL R9720

CNR - 96452	(12 volt)
CNR - 96454	(24 volt)

#### SPECIFICATIONS

CALCULATED CAPACITY:	27,000 BTU'S/HOUR (38° C. AMBIENT; 57° C. REFRIG TEMP.)
AIRFLOW:	740 CFM
CURRENT DRAW:	10.5 AMPS AT 13.6 VOLTS 5.3 AMPS AT 27.2 VOLTS
WIDTH:	686 mm
DEPTH:	311 mm
HEIGHT:	290 mm
WEIGHT:	16.8 kgs

**NOTE:**  
THE CAPACITY OF A CONDENSER DOES NOT INDICATE  
THE COOLING CAPACITY OF A SYSTEM.

#### SPECIFICATIONS

CALCULATED CAPACITY:	33,000 BTU'S/HOUR (38° C. AMBIENT; 57° C. REFRIG TEMP.)
AIRFLOW:	900 CFM
CURRENT DRAW:	24 AMPS AT 13.6 VOLTS 12 AMPS AT 27.2 VOLTS
WIDTH:	650 mm
DEPTH:	406 mm
HEIGHT:	254 mm
WEIGHT:	18.2 kgs

**NOTE:**  
THE CAPACITY OF A CONDENSER DOES NOT INDICATE  
THE COOLING CAPACITY OF A SYSTEM.



#### RED DOT MODEL R9725

CNR - 96512	(12 volt)
CNR - 96524	(24 volt)

**Condensers: Replacement Coils****ROOFTOP CONDENSER COILS****CNS-92512 AIR -CHIEF**

FITTINGS: MALE FLARE (MF)  
 CONSTRUCTION: COPPER TUBE/ALUMINIUM FIN  
 APPLICATION: ROOFTOP CONDENSER CNR-92512, CNR92524  
 DIMENSIONS: LENGTH - 860mm; HEIGHT - 180mm; DEPTH - 90mm

**CNS-96412 RED DOT R6060 / R6160; R6000 / R6100**

FITTINGS: MALE INSERT O-RING (MIOR)  
 CONSTRUCTION: COPPER TUBE/ALUMINIUM FIN  
 APPLICATION: ROOFTOP CONDENSER CNR-96412  
 REPLACES OE: 4-3874-1 (77R0500)  
 DIMENSIONS: LENGTH - 590mm; HEIGHT - 260mm; DEPTH - 50mm

**CNS-96432 RED DOT R6260**

FITTINGS: MALE INSERT O-RING (MIOR)  
 CONSTRUCTION: COPPER TUBE/ALUMINIUM FIN  
 APPLICATION: ROOFTOP CONDENSER CNR-96432; CNR-96434  
 REPLACES OE: 4-5122-0  
 DIMENSIONS: LENGTH - 580mm; HEIGHT - 460mm; DEPTH - 65mm

**CNS-96442 RED DOT R4500**

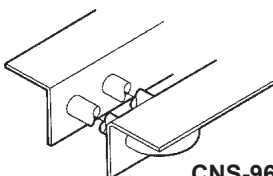
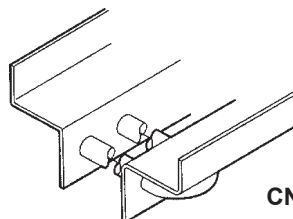
FITTINGS: MALE INSERT O-RING (MIOR)  
 CONSTRUCTION: COPPER TUBE/ALUMINIUM FIN  
 APPLICATION: ROOFTOP CONDENSER CNR-96442; CNR-96444  
 ROOFTOP UNIT: RO-98612, RO-98624  
 4-5045-0  
 DIMENSIONS: LENGTH - 860mm; HEIGHT - 498mm; DEPTH - 65mm

**CNS-96452 RED DOT R9720-0**

FITTINGS: MALE INSERT O-RING (MIOR)  
 CONSTRUCTION: COPPER TUBE/ALUMINIUM FIN  
 APPLICATION: ROOFTOP CONDENSER R9720-0  
 REPLACES OE: 4-4069-0  
 DIMENSIONS: LENGTH - 640mm; HEIGHT - 220mm; DEPTH - 65mm

**CNS-96454 RED DOT R9720-1, -2, -3, -4**

FITTINGS: MALE INSERT O-RING (MIOR)  
 CONSTRUCTION: COPPER TUBE/ALUMINIUM FIN  
 APPLICATION: ROOFTOP CONDENSER R9720-1/2/3/4  
 REPLACES OE: 4-4069-1  
 DIMENSIONS: LENGTH - 640mm; HEIGHT - 220mm; DEPTH - 65mm

**RED DOT COIL HEADER TYPES****CNS-96452 Header Type****CNS-96454 Header Type**

**NOTE: CONDENSER COIL MEASUREMENTS ARE NOMINAL AND DO NOT INCLUDE PLATES, PIPES OR FITTINGS. AS CONDENSER COILS ALSO VARY WIDELY IN SHAPE, MEASUREMENTS SHOULD BE CONSIDERED AS AN AID TO IDENTIFICATION ONLY. DIMENSIONS SHOULD NOT BE USED TO LOCATE SUBSTITUTES.**

## Condensers: Replacement Coils

### ROOFTOP CONDENSER COILS



#### CNS-96512 RED DOT R9725

FITTINGS: MALE INSERT O-RING (MIOR)  
 CONSTRUCTION: COPPER TUBE/ALUMINIUM FIN  
 APPLICATION: ROOFTOP CONDENSER CNR-96512, CNR-96524  
 REPLACES OE: 4-4440-0 (77R0090) 2 pcs REQUIRED  
 DIMENSIONS: LENGTH - 610mm; HEIGHT - 170mm; DEPTH - 55mm  
 (UNIT TAKES TWO COILS)



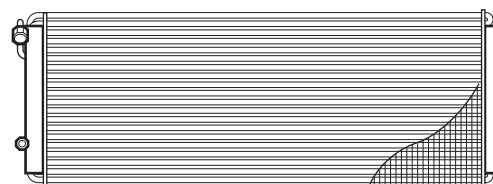
#### CNS-98212 CABMASTER

FITTINGS: MALE FLARE (MF)  
 CONSTRUCTION: ALUMINIUM TUBE/ALUMINIUM FIN  
 APPLICATION: ROOFTOP UNIT RO-98212  
 REPLACES OE: 043-0624  
 DIMENSIONS: LENGTH - 595mm; HEIGHT - 195mm; DEPTH - 50mm



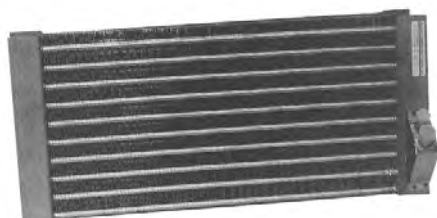
#### CNS-98512 KYSOR KA300 TO 03/1995

FITTINGS: MALE INSERT O-RING (MIOR)  
 CONSTRUCTION: COPPER TUBE/ALUMINIUM FIN  
 APPLICATION: ROOFTOP UNIT RO-98512  
 REPLACES OE: 401029  
 DIMENSIONS: LENGTH - 610mm; HEIGHT - 185mm; DEPTH - 50mm



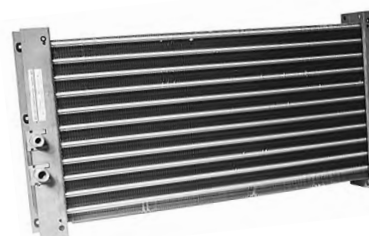
#### CNS-98514 KYSOR KA300 03/1995 on

FITTINGS: MALE INSERT O-RING (MIOR)  
 CONSTRUCTION: COPPER TUBE/ALUMINIUM FIN  
 APPLICATION: ROOFTOP UNIT RO-98512 (late)  
 REPLACES OE: 401102  
 DIMENSIONS: LENGTH - 535mm; HEIGHT - 204mm; DEPTH - 48mm



#### CNS-98712 RED DOT R9727

FITTINGS: MALE INSERT O-RING (MIOR)  
 CONSTRUCTION: COPPER TUBE/ALUMINIUM FIN  
 APPLICATION: ROOFTOP UNIT RO-98712; RO-98724  
 REPLACES OE: 4-3586-0 (77R0350)  
 DIMENSIONS: LENGTH - 560mm; HEIGHT - 260mm; DEPTH - 65mm



#### CNS-98812 RED DOT R9737, R9757

FITTINGS: MALE INSERT O-RING (MIOR)  
 CONSTRUCTION: COPPER TUBE/ALUMINIUM FIN  
 APPLICATION: ROOFTOP UNIT RO-98812; RO-98824  
 REPLACES OE: 4-4720-0 (77R0660); 4-4724-0  
 DIMENSIONS: LENGTH - 570mm; HEIGHT - 280mm; DEPTH - 60mm

**NOTE: CONDENSER COIL MEASUREMENTS ARE NOMINAL AND DO NOT INCLUDE PLATES, PIPES OR FITTINGS. AS CONDENSER COILS ALSO VARY WIDELY IN SHAPE, MEASUREMENTS SHOULD BE CONSIDERED AS AN AID TO IDENTIFICATION ONLY. DIMENSIONS SHOULD NOT BE USED TO LOCATE SUBSTITUTES.**